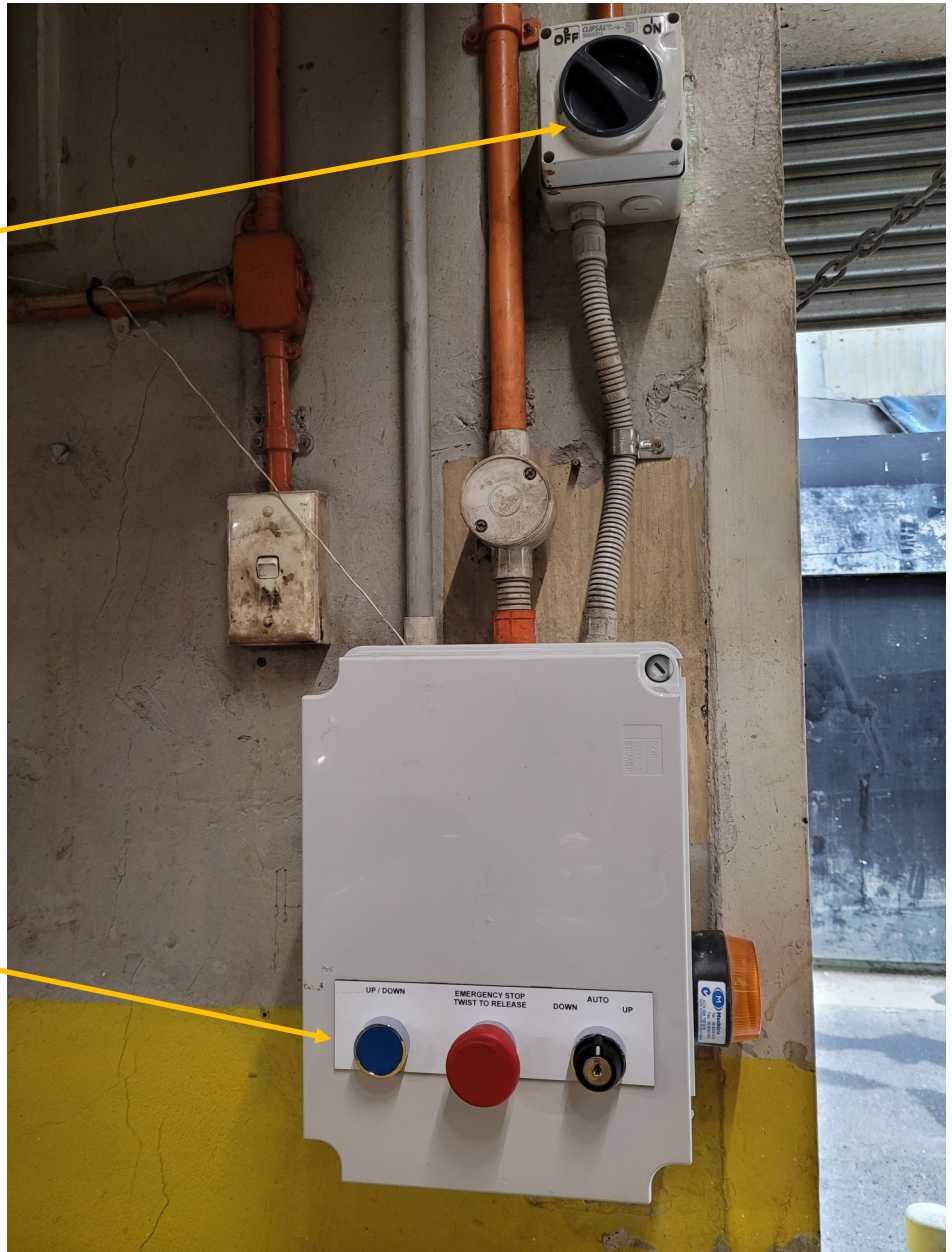


Ross House roller door - how to exit instructions

POWER BUTTON



Press **BLUE BUTTON**
to open

Instruction to open

1. Please ensure that the power is on (at the top). If it is on 'Off' turn it to 'On' and please wait 15 seconds before pressing the **BLUE BUTTON**
2. Do not touch the **RED** otherwise the Police will arrive.
3. Do not touch the **BLACK**

To open the roller door

To open the roller door, press the **BLUE BUTTON HARD**.

The roller door will close behind you.

For any issues, please contact Ross House staff (during business hours)
on rosshouse@rosshouse.org.au / (03) 9650 1599

