



## Strategic Plan 2025 - 2030

**This plan has some hard words.**

When we use these hard words:

- The word is in **blue**
- We write what that word means



**Ross House Association made this plan.**

When we say **we** it means Ross House Association.

**Easy English**



## We have a **Strategic Plan**.

A **Strategic Plan** says

- What we want to do in the future
- And how we will get things done

We call it The Plan

The Plan goes from 2025 to 2030.



The Ross House Association **Committee** and Staff wrote The Plan. They used **feedback** from the Ross House community.

The **Committee** is a group of people who make decisions about Ross House.

**Feedback** is when you tell us what you think.

## We have **Values**.

**Values** are how we make choices.



Our Values are

### **Justice**

We should all be treated fairly.

This means no one is left out or treated badly.



## Sustainability

We care about the earth and the **environment**.  
This means we look after nature and use less.

**Environment** is the air, water, land, plants, and animals around us.



## Collaboration

We listen to what people say and want.

This means we make choices together.



## Community

We help people learn and work together.

This means we share skills and help each other.



## Integrity

We are honest and we do what we say we will do.

This means people can trust us.

## There are 3 areas in The Plan

### Community

**Community** means the people at Ross House

We want Ross House to be a friendly and welcoming place.

We are proud of the special things that make Ross House different.

We want to support these special things.



### Place

**Place** means the building and rooms at Ross House.

We want Ross House to have good spaces for everyone to use.

We want to make changes that help members and tenants do their work.



### Governance

**Governance** means how Ross House is run.

We want Ross House to have good leaders.

We want our leaders to make good choices for everyone.



**There is work to do in each area.**

**We have come up with some ideas on what work we need to do.**

## **Community**

We want to:



Help **members** and **tenants** learn new skills.

**Members** are people or groups that belong to Ross House.

**Tenants** are groups who rent space in Ross House.



Have more places for meetings and **social activities**.

**Social activities** are things you do with other people, like talking, eating, or working together.



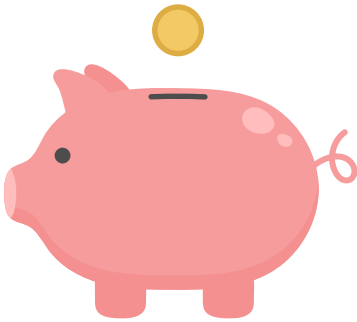
Make the website easy for everyone to use.

This means the website should be simple, clear, and include everyone.



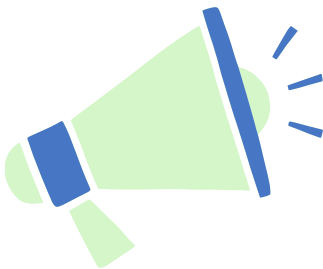
Make a plan to do these things.

This means we will write down what we want to do and how to do it.



Give money to new groups to help them start their work through a [grant](#).

A **grant** is money given to help a group do a project.



Tell more people about Ross House and what we do here.

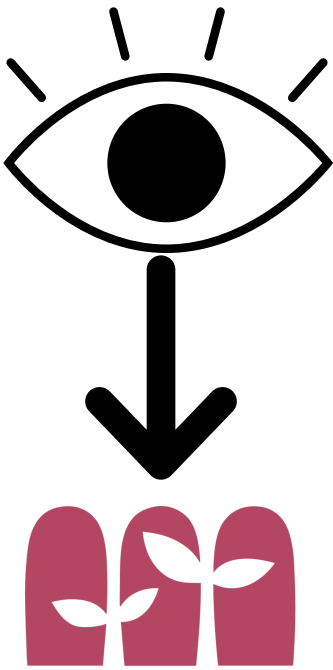


## Place

We also want to:

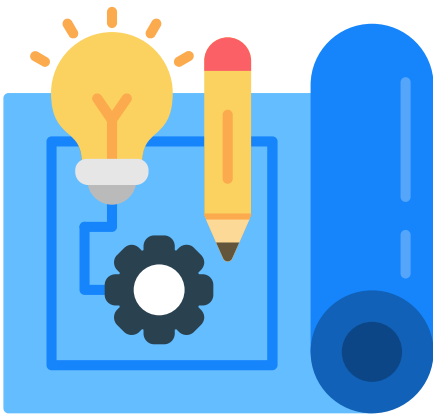
Upgrade the bathrooms, kitchens, bike spaces, and foyers to be better for everyone to use.

**Upgrade** means to make something work better or look better.



Change the Ross House colours and **logo** so people know it better.

A **logo** is a symbol or picture that shows what Ross House is.



Make a plan for how Ross House will suit your needs now and in the future.

The **future** is what will happen next or later.

**Needs** are the things you must have to use Ross House.



Make Ross House greener, check energy use, and look at a rooftop garden.

**Greener** means we want to save energy and help the environment.

**Environment** means the air, water, land, plants, and animals around us.

A **rooftop garden** is a garden on the roof of a building that you can visit.

## Governance

We also want to:



Make it easier for people to **donate** money to our **trust**.

**Donate** means to give money to people who need it like a charity.

**Trust** is somewhere we save money to use in the future.



Check if we are **managing** our money well.

**Managing** means to take care of something and make sure it is used correctly.



Make sure our **Subcommittees** and **Working Parties** help Ross House.

**Subcommittees** and **Working Parties** are small groups of people who help with a task or problem.



Plan who will do jobs in the future and what **skills** they need.

**Skills** are what people need to do their jobs well.